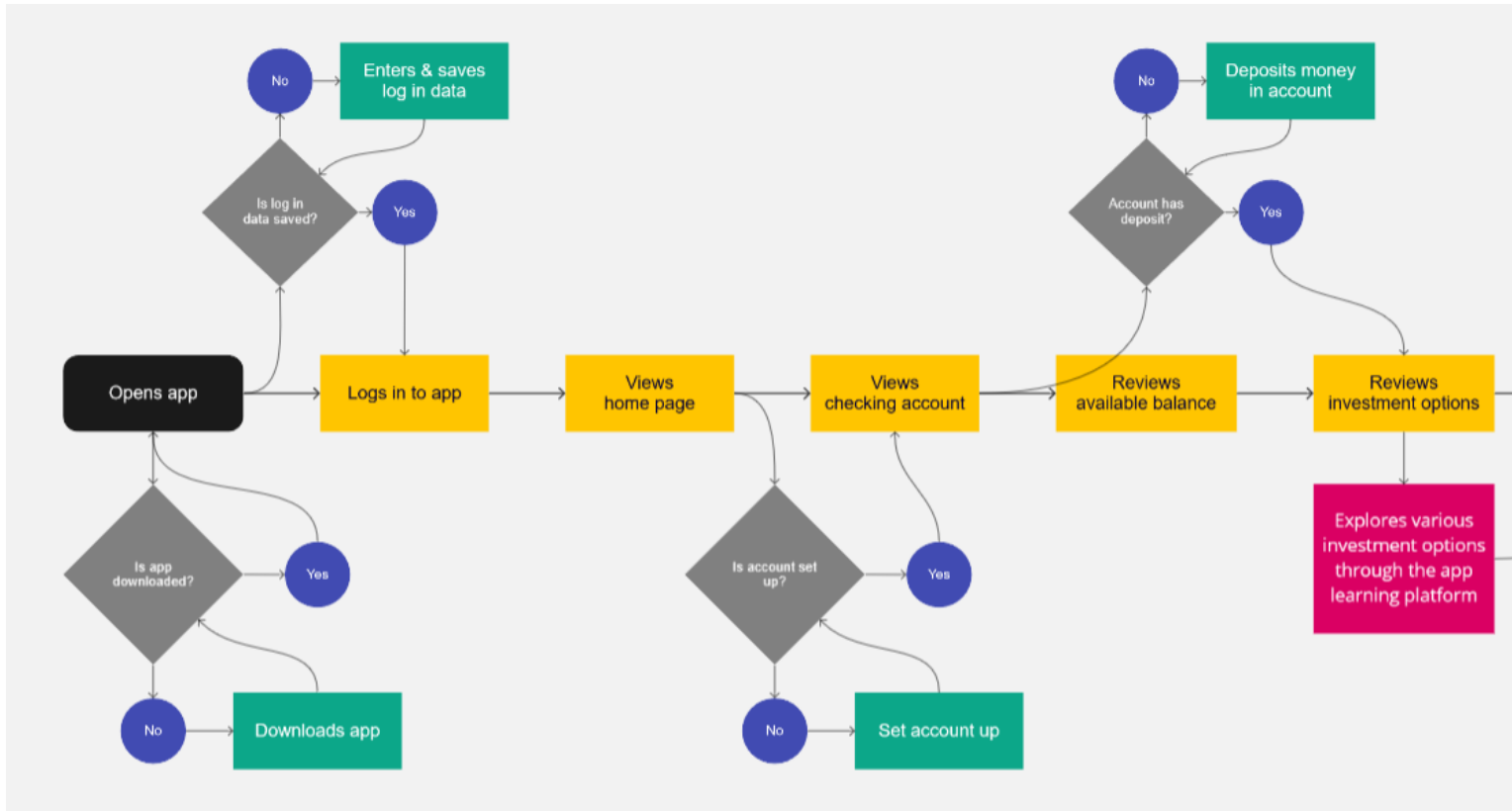


# Kale Material Design

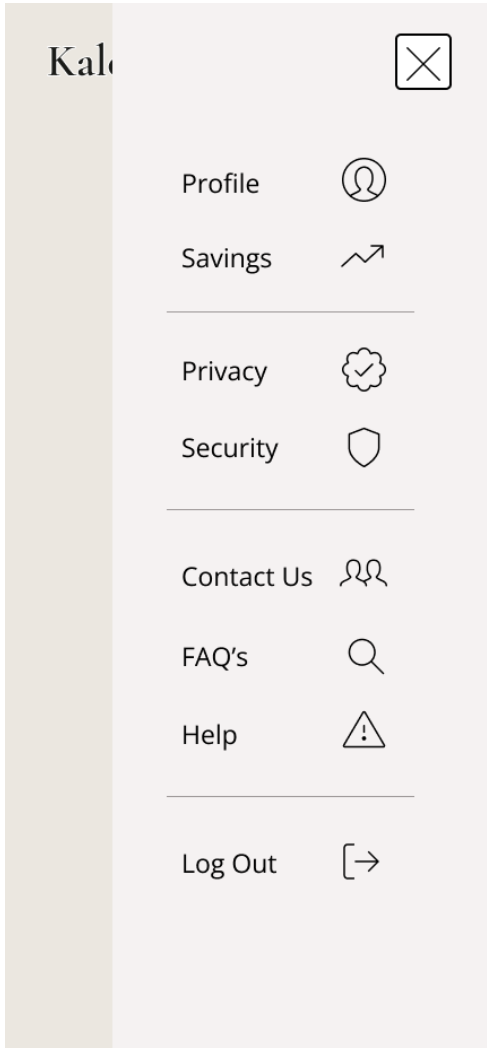


## Material Design Components Focus

1. Navigation Drawer
2. Top App Bar
3. Bottom Navigation
4. Cards

# Navigation Drawer

OLD VERSION

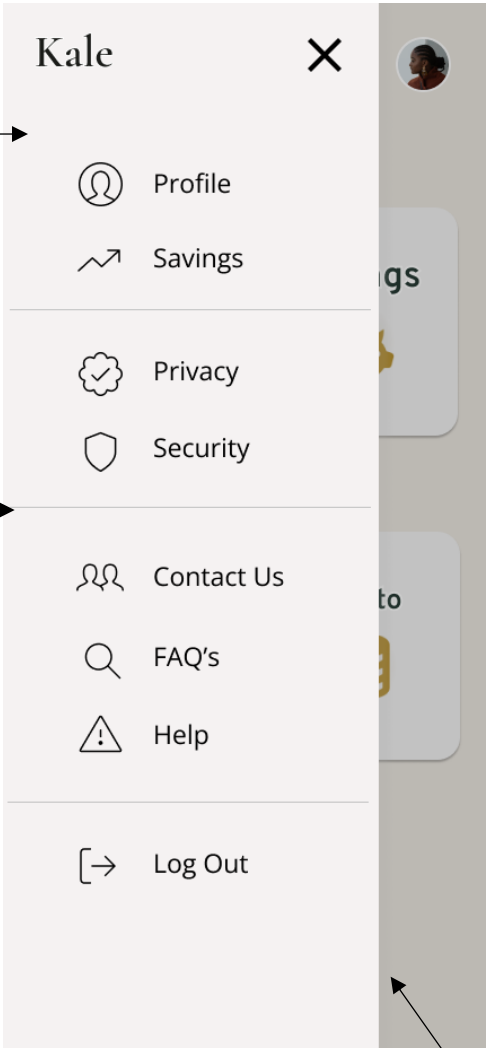


Modal navigation drawer sheet modified to open from left side of the screen since the app is in a market for left-to-right language (ie. English).

Horizontal dividers used to separate groups of navigation destinations in drawer sheet extend across full width of the drawer.

Navigation drawer can be closed by 1. tapping its scrim or 2. tapping the close button or 3. swiping the drawer in the direction of the anchoring screen edge (to the left).

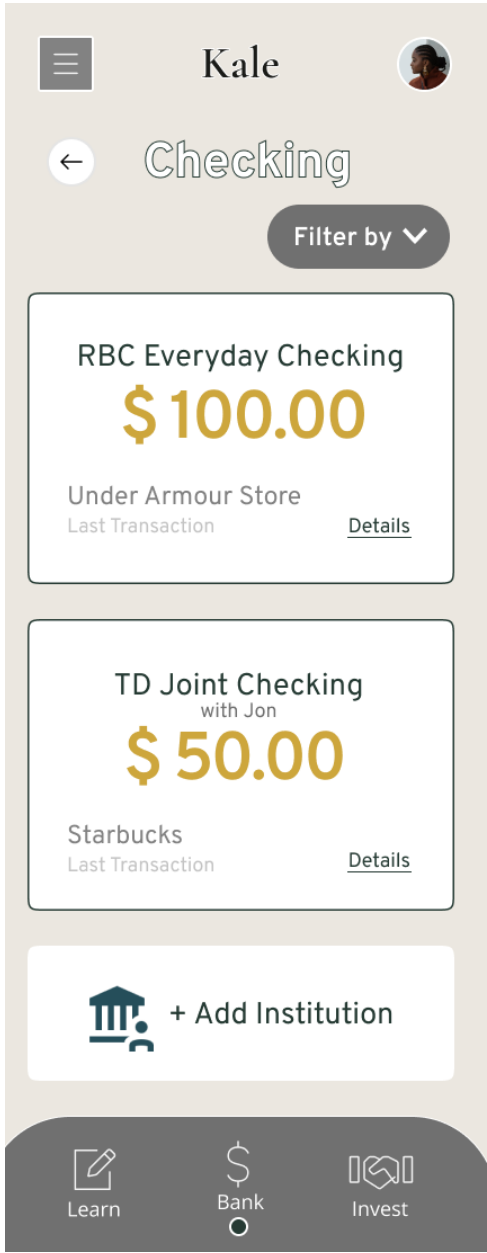
NEW VERSION



Modal navigation drawer blocks interaction and is elevated above the rest of the app's screen.

# Universal App Bar

## OLD VERSION



App bar container prioritizes the navigation icon for the drawer sheet first then app name then other supplementary information such as the user profile picture.

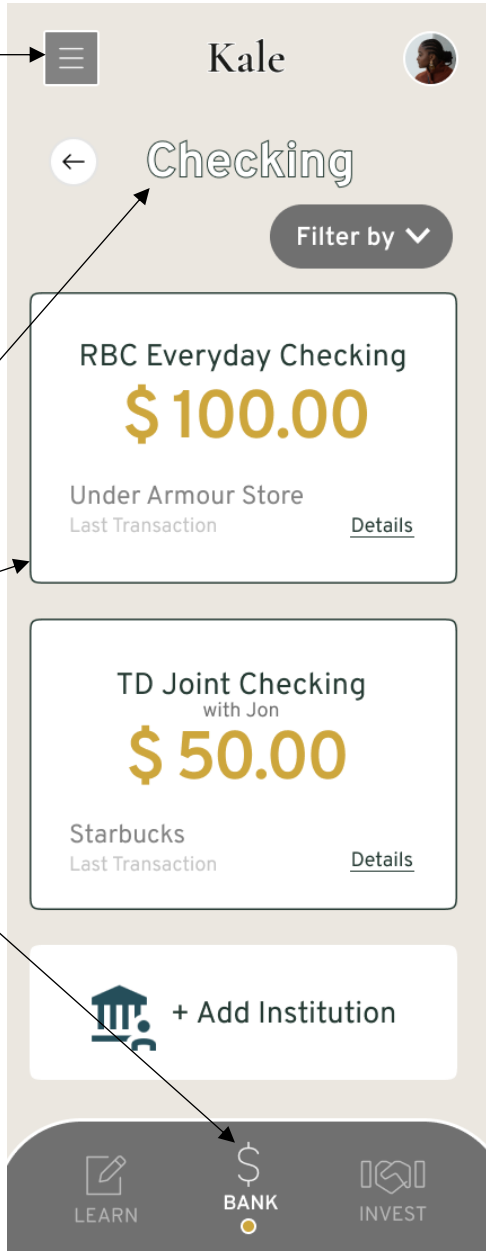
App screen titles are left-aligned for Android screens and center-aligned for iOS screens.

Explicit containment for each card with visible boundaries to provide emphasis.

Differentiate between inactive icons and active icons with sufficient contrast (color emphasis and opacity).

Navigation item transitions with fade-through pattern to distinguish a peer relationship between items.

## NEW VERSION



App bar container prioritizes the navigation icon for the drawer sheet first then app name then other supplementary information such as the user profile picture.

App screen titles are left-aligned for Android screens and center-aligned for iOS screens.

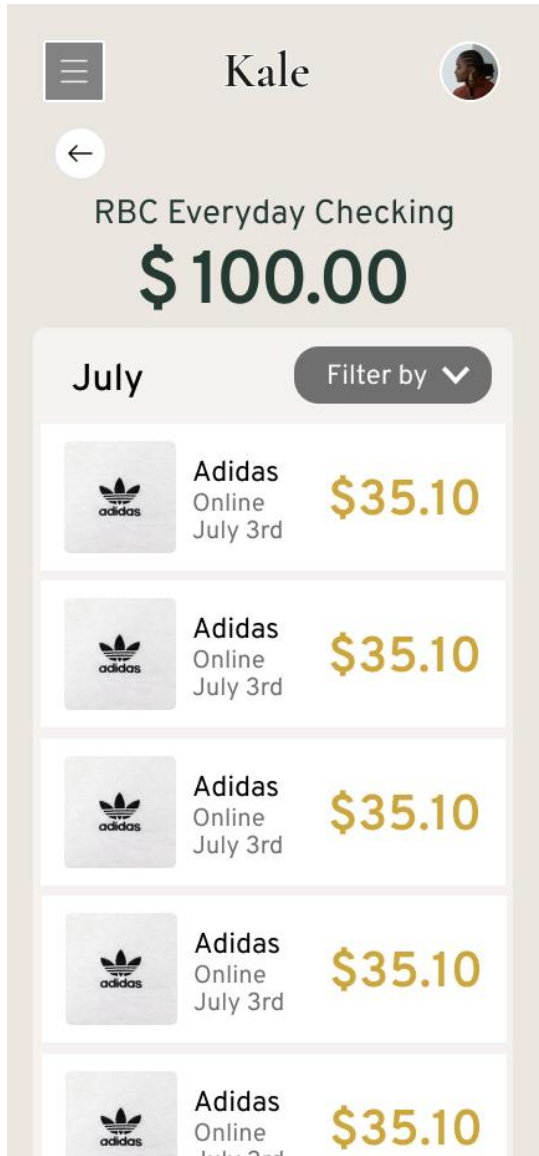
Explicit containment for each card with visible boundaries to provide emphasis.

Differentiate between inactive icons and active icons with sufficient contrast (color emphasis and opacity).

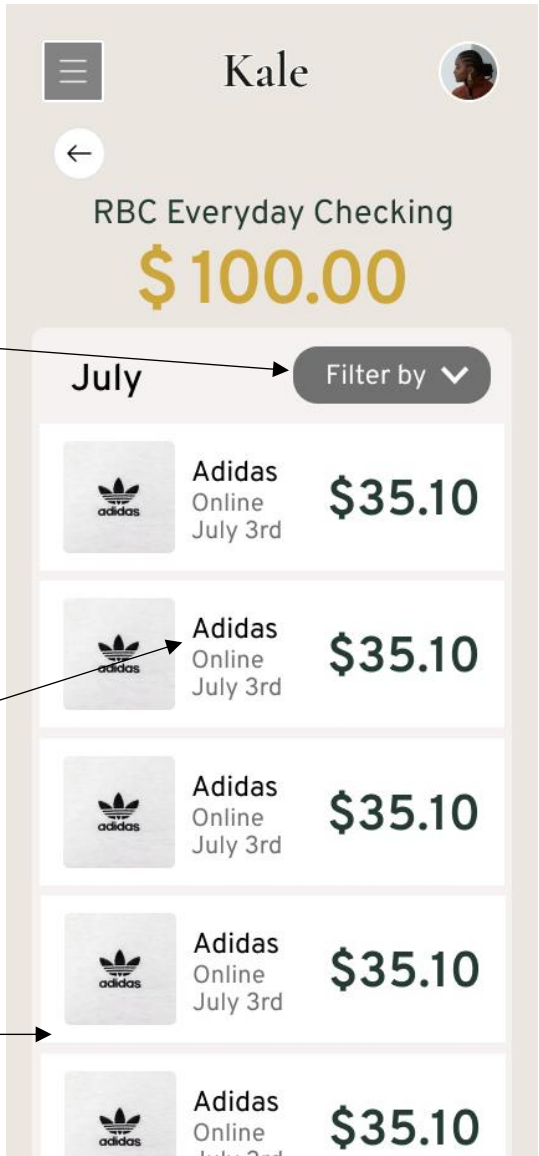
Navigation item transitions with fade-through pattern to distinguish a peer relationship between items.

Universal Bottom Navigation

OLD VERSION



NEW VERSION



Filter of a collection is placed outside of the card collection and will apply to each card.

Card content comprised of content blocks with different levels of emphasis and hierarchy.

Card content for account details transactions is scrollable without the content within the cards to scroll.

## Other Component Implementations:

### Universal Top App Bar

- App bar is differentiated by elevation (Android) or hairline bottom border (iOS)
- App bar is positioned at the same elevation as content and with scrolling, it increases elevation with content scrolling behind it

### Universal Bottom Navigation

- Navigation icons can be represented by dynamic information with badges in items like “invest”

### Cards

- Account cards collection can be reorganized by picking up and releasing gestures on cards by increasing its elevation; no swiping gesture is allowed to avoid detaching of cards
- Limit number of actions within each card as they're only entry points for more detailed information
- Collection of the account cards are placed consistently to make them more scannable upon encountering the screen